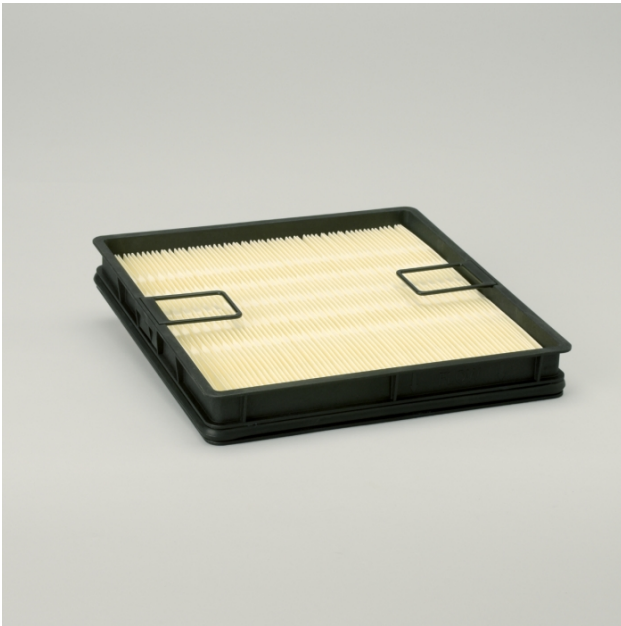


P633484

AIR FILTER, SAFETY



Why Choose Donaldson Safety Filters?

Safety filters have two functions: to act as a backup to the primary filter and to protect the engine during primary filter servicing.

- Serve as a backup filter in case of primary filter damage or improper installation.
- Prevent contaminants from entering the clean side of the air intake system during primary filter servicing.
- Designed to plug rapidly if contamination finds its way past the primary filter, alerting operators about an issue.
- Recommend that safety filters are replaced with every third primary filter change unless there has been a failure of the primary filter.

Attributes

Length	286 mm (11.26 inch)
Width	265 mm (10.43 inch)
Height	37.5 mm (1.48 inch)
Efficiency	95.9
Efficiency Test Std	ISO 5011
Primary Application	CUMMINS DIRECT FLOW 1200 SERIES
Type	Safety

Style

Panel

Media Type

Safety

Other Information

UPC Code

742330988824

The information contained herein is general in nature and may not reflect actual information regarding the part at time of shipment. Parts may originate in more than one country – the actual country of origin and HS Code will be reflected on the Commercial Invoice(s) that accompanies the goods.